



Homeless Planning Council
of Delaware

Homelessness in Delaware: Summary of the 2011 Point-in-Time Study



Homelessness is not a simple problem affecting some of us but is part of a complex housing issue that has many causes, solutions and outcomes. Regardless of the cause of a person's homelessness, whether they belong to a family or are an individual, whether they have a disability or have recently lost their job, homelessness affects all Delawareans.

Objectives

- **Purpose and Methodology of Point-in-Time Studies**
- **What is the definition of being homeless?**
- **2011 Point-in-Time Study on Delaware's homeless**
- **Comparison of Prior Year's Data**

Purpose of Point-in-Time Studies

- A snapshot of the homeless population in a community on one designated night
- An estimate of the local magnitude of homelessness
- Will not capture every single homeless person
- Starting point for Community Planning in the effort to alleviate and eliminate homelessness

Methodology of Point-in-Time Study

- **3 Different Client Surveys Conducted**
 - Homeless Management Information System
 - Housing Providers Survey
 - Direct Client Survey
- **Housing Inventory Survey**
 - Program Description
 - # of Beds
 - # of Beds Available on PIT Night

Definition of Homelessness

A homeless person is someone who is living on the street or in an emergency shelter, or who would be living on the street or in an emergency shelter without assistance. He/She must be living at one of the following places:

- Place not meant for human habitation
- Emergency Shelter
- Transitional or Supportive Housing
- Hospital or other institution (up to 30 days)
- Detox/Psychiatric Hospital/Jail (being discharged within 7 days)
- Fleeing a domestic violence situation and subsequent residence has been identified



1,405

homeless persons in
Delaware on
January 25, 2011.

Data Missing for 280 Beds (75 ES, 152, TH, 53 PSH)

Source: Homeless Planning Council of Delaware Point-in-Time survey (January 25, 2011).

County Breakdown: January 2011

	<i>NCC</i>	<i>Kent</i>	<i>Sussex</i>
Sheltered	1001	186	85
Unsheltered	14	3	5
Hotel/Motel Voucher	3	13	6
Hotel/Motel no Voucher	10	2	4
<i>Total</i>	<i>1028 (77%)</i>	<i>204 (15%)</i>	<i>100 (8%)</i>

Note - 73 Persons were Sheltered in Statewide Programs that did not identify the Zip Code/County of Residence
** Jail/Prison or Treatment Program

Type of Living Place -NCC

NEW CASTLE COUNTY

Households with Children

Emergency Shelter

# of Beds	# of Units	PIT Count	Utilization Rate
114	40	105	92%

Transitional Housing

# of Beds	# of Units	PIT Count	Utilization Rate
217	61	139	64%

Permanent Supportive Housing

# of Beds	# of Units	PIT Count	Utilization Rate
37	14	42	114%

Individuals

Emergency Shelter

# of Beds	PIT Count	Utilization Rate
237	235	99%

Nighttime Drop-in

# of Beds	PIT Count	Utilization Rate
68	68	100%

Transitional Housing

# of Beds	PIT Count	Utilization Rate
316	234	74%

Permanent Supportive Housing

# of Beds	PIT Count	Utilization Rate
411	314	76%

Type of Living Place - Kent

KENT COUNTY

Households with Children

Emergency Shelter

# of Beds	# of Units	PIT Count	Utilization Rate
64	20	46	72%

Transitional Housing

# of Beds	# of Units	PIT Count	Utilization Rate
70	24	36	51%

Permanent Supportive Housing

# of Beds	# of Units	PIT Count	Utilization Rate
0	0	0	0%

Individuals

Emergency Shelter

# of Beds	PIT Count	Utilization Rate
59	65	110%

Transitional Housing

# of Beds	PIT Count	Utilization Rate
9	NA	NA%

Permanent Supportive Housing

# of Beds	PIT Count	Utilization Rate
9	7	78%

Type of Living Place - Sussex

SUSSEX COUNTY

Households with Children

Emergency Shelter

# of Beds	# of Units	PIT Count	Utilization Rate
23	8	21	91%

Transitional Housing

# of Beds	# of Units	PIT Count	Utilization Rate
53	16	15	28%

Permanent Supportive Housing

# of Beds	# of Units	PIT Count	Utilization Rate
0	0	0	0%

Individuals

Emergency Shelter

# of Beds	PIT Count	Utilization Rate
41	33	80%

Transitional Housing

# of Beds	PIT Count	Utilization Rate
15	6	40%

Permanent Supportive Housing

# of Beds	PIT Count	Utilization Rate
8	8	8%

Individuals and Families

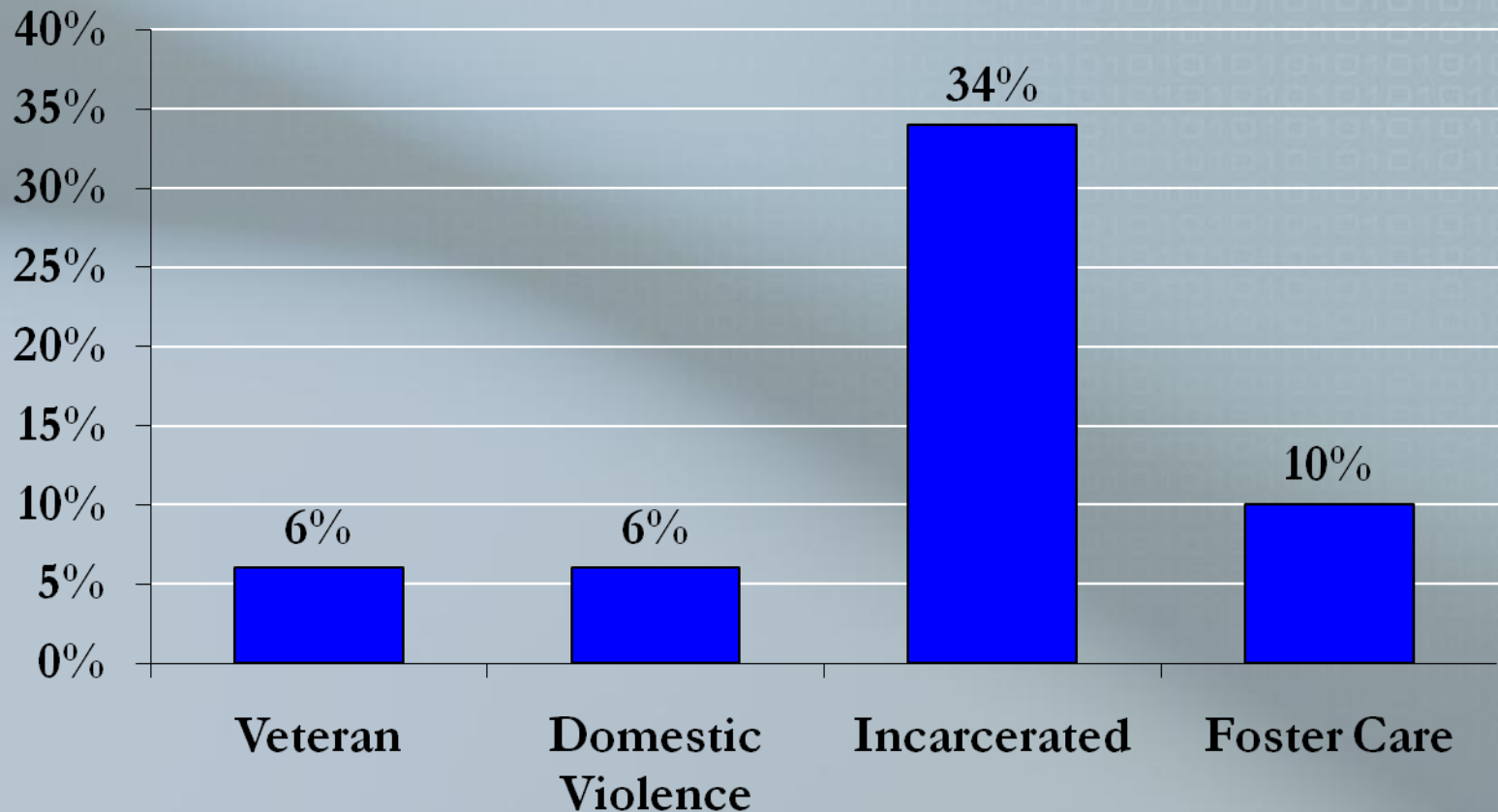
- 983 Sheltered Individuals
- 22 Unsheltered Individuals
- 400 Sheltered Members of a Family
 - 254 Children (under the age of 18)
 - 146 Adults
 - 132 Total Families
 - 123 – Single Mothers
 - 6 – Couples with Children
 - 2 – Single Fathers
 - 1 – Other Relative with Children

Demographic Data

- 54% are Males
- 5% are Hispanic
- 62% are African American
- 25% have a Mental Illness
- 20% have a Chronic Substance Abuse Problem
- 10% have a Physical Disability
- 4% reported being diagnosed with HIV/AIDS
- 2% have a Developmental Disability

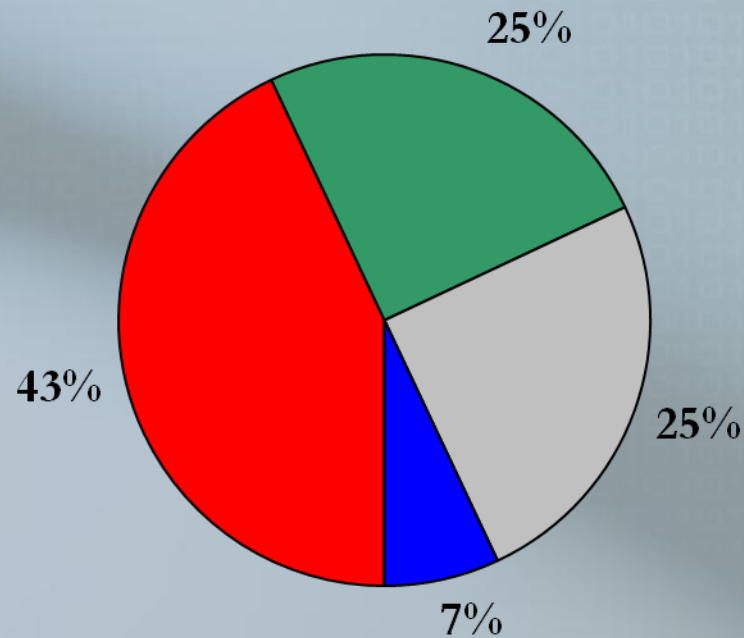
Respondent Characteristics

Homeless Military, Domestic Violence, Incarceration, Foster Care History



Income Level

Homeless Respondents' Income Levels



■ Zero Income ■ \$1-\$500 □ \$501-\$1,000 ■ \$1,000 +

Chronically Homeless

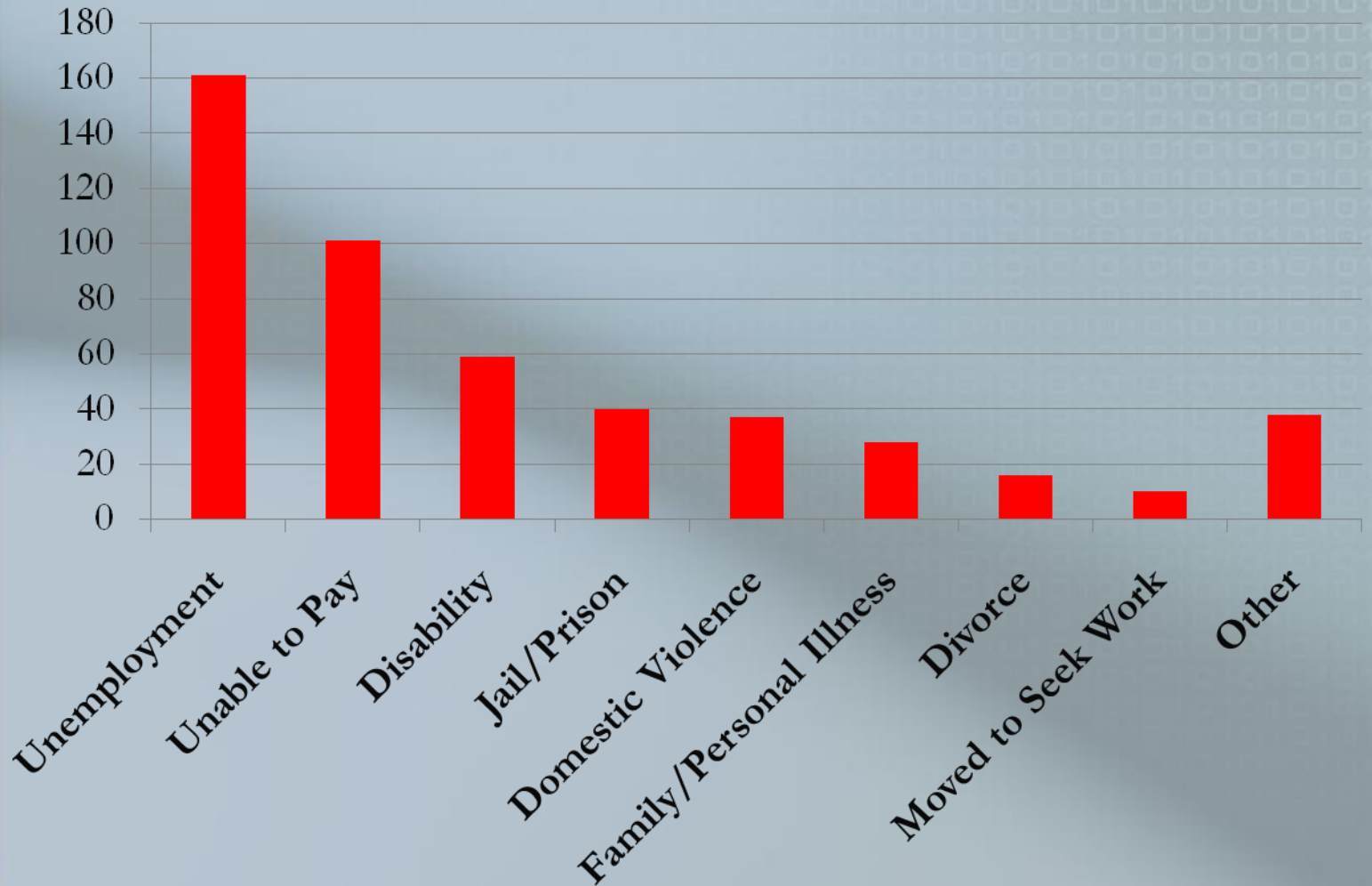
A person is chronically homeless if he/she was in an emergency shelter or unsheltered and:

- An unaccompanied homeless individual (18 or older) with a disabling condition or a family with at least one adult member (18 or older) who has a disabling condition;
- Has been homeless a year or more, OR
- Has had at least four episodes of homelessness in the past three years

119 Persons

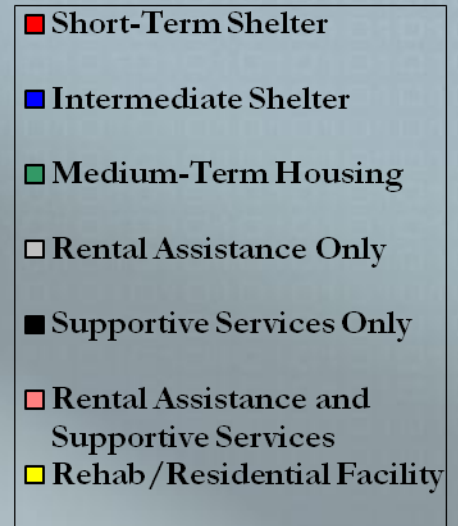
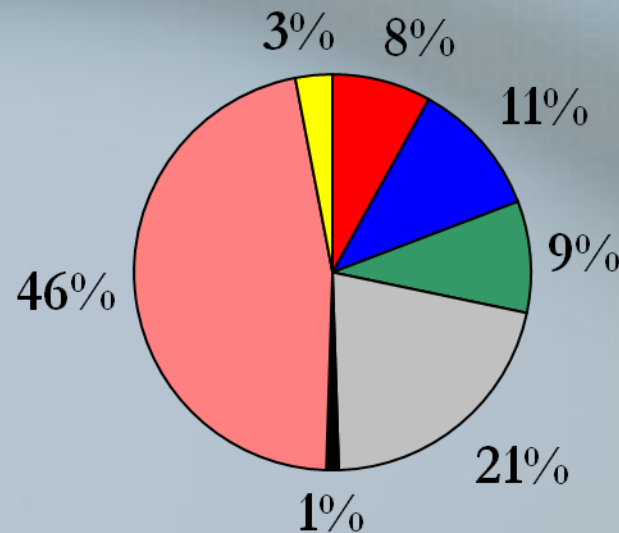
met the criteria for chronic homelessness.

Reasons for Homelessness



Housing Needed to Resolve Homelessness

Housing Needed to Resolve Homelessness



Housing Needed to Resolve Homelessness by Housing Place

	Emergency Shelter	Transitional Housing	PSH	Unsheltered
Short-Term	65	7	7	1
Intermediate	90	14	3	2
Medium-Term	27	52	8	1
Rental and Services	94	135	221	2
Rental Only	72	55	76	4
Rehab	28	2	1	3
Other	3	7	2	2

Annual Estimate

Formula:

$$\underline{A + ((B*51)*(1-C)) = \text{Annual Estimate}}$$

A = Currently Homeless (not including permanent supportive housing)

B = Homeless within last 7 days or entered community in last 7 days

C = % of clients that have had a previous homeless episode in last 12 months

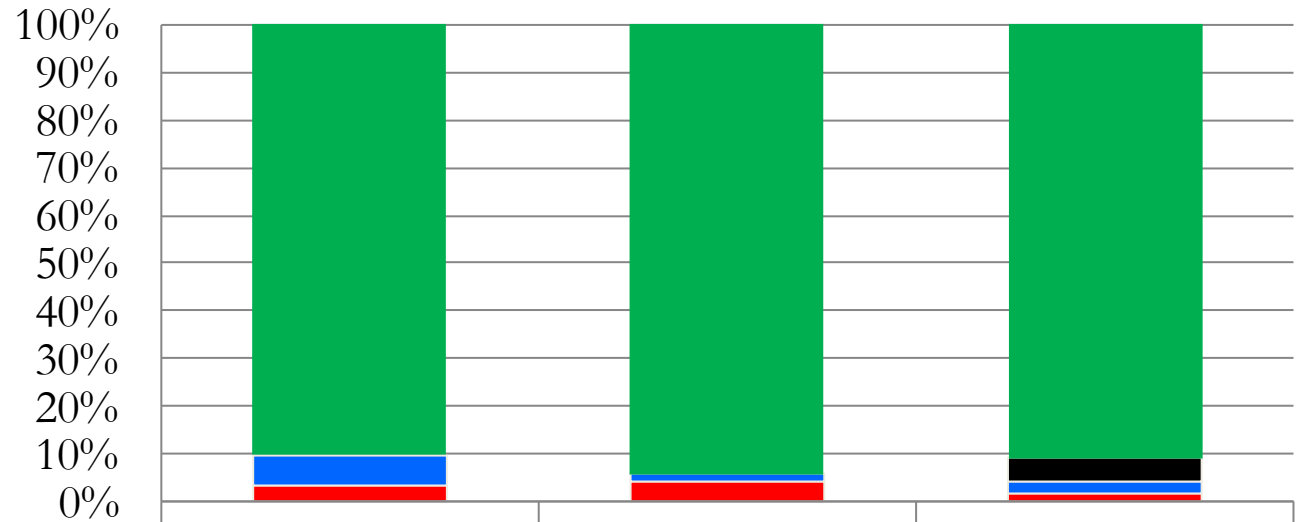
= 6584 persons

2010 Annual Estimate was 5,428 persons

2009 Annual Estimate was 6,759 persons

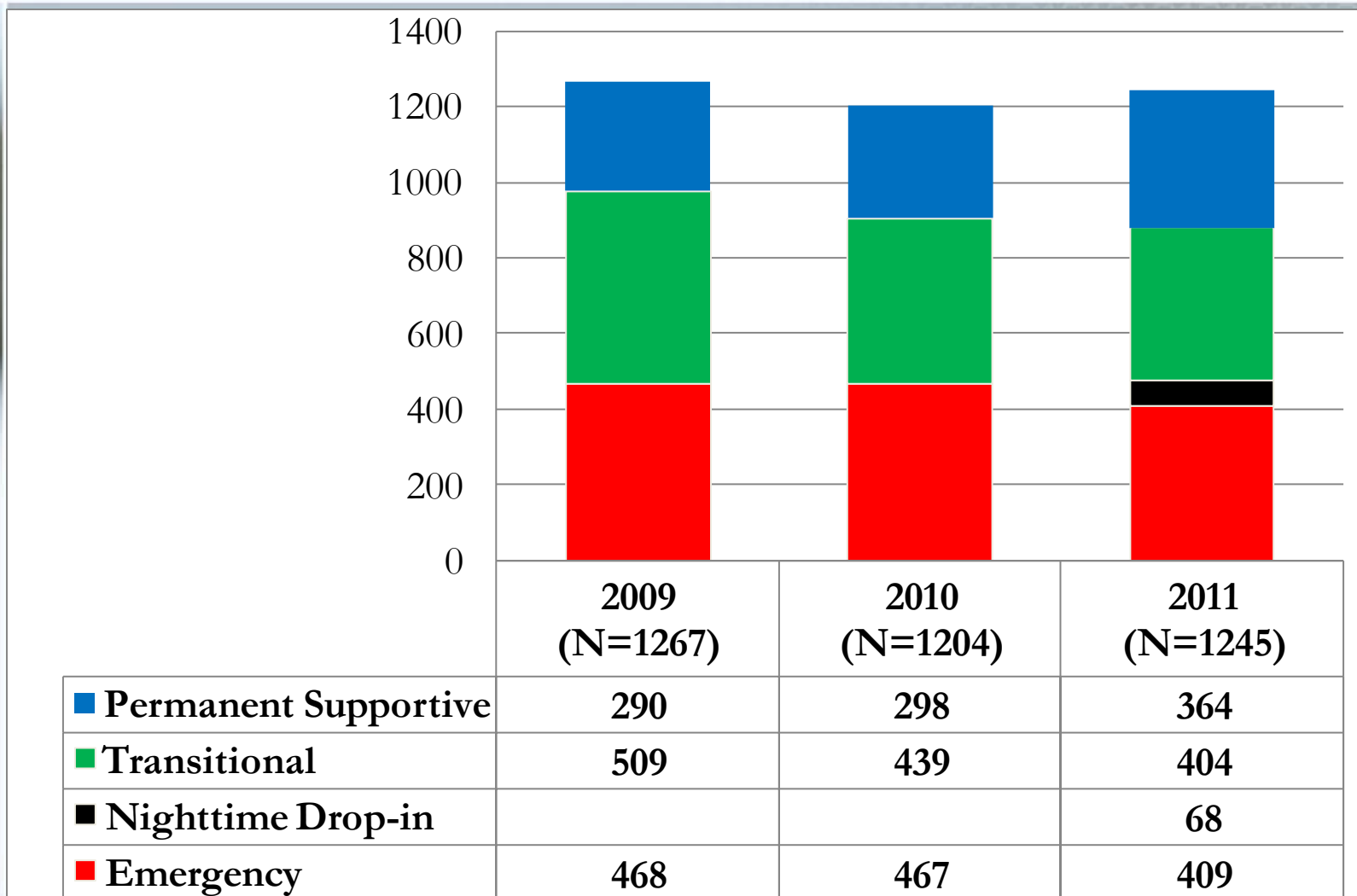
Comparison of 2009, 2010 and 2011 Data

Homeless Persons by Type of Living Place



	2009 (N=1,479)	2010 (N=1,284)	2011 (N=1,405)
■ Sheltered	1336	1210	1277
■ Night Drop-In			68
■ Motel/Hotel	93	22	38
■ Unsheltered	50	52	22

Homeless Program Comparison





Invisible People

“They are people who are, to most of us, invisible. They are the homeless. Nobility, beauty, strength, vulnerability... they are all there if we take the time to look. The next time you pass someone sleeping in the street, realize that as a child, this is probably not the life they had dreamed of leading. Each has a family, friends and a story of why they are in their present circumstance.”

Prints and Text by Neil Shigley



For more information:

Susan Starrett

Homeless Planning Council of Delaware

(302) 654-0126

sstarrett@hpcdelaware.org

www.hpcdelaware.org